

# Caring For Those With Access & Functional Needs

No Box-- in Accessible Planning  
Glenda Ford-Lee, MHR, OSDH/EPRS,  
At-Risk Populations Coordinator



# Access & Functional Needs Populations (AFN) Definition

- **Consist of people with mobility disabilities, people who are Deaf or Hard-of-Hearing, people who are Blind or have Low Vision, people who are senior in age, people who are without transportation,**



# Access & Functional Needs Populations (AFN) Definition

- People who are homeless, people who have low literacy, young families, people with invisible disabilities, and women who are pregnant.



# C-MIST In Emergency Planning

- **Communication**
- **Medical**
- **Independence**
- **Support**
- **Transportation**



# Pandemic Affecting AFN Communities

- **Transportation**
- **Medical**
- **Communication**
- **Community Support**



# Pandemic Affecting AFN Communities

- **Stressors Increased**
- **Educational Process Decreased**
- **Food Supply Uncertainty**
- **Utilities**





# Looking Through AFN Lens



- **Without Car/ Very Limited Transportation**
- **Without Job (Reduced Interactions with Friends and Family)**
- **Without or Limited Medical Care**
- **Reduced Independence**
- **Reduced Interaction with FBO's**

# Differences in Abilities for AFN Populations

- **Access to Medical Care**
- **Social Contacts/ Interactions**
- **Food Supply/Resources**
- **Independence**
- **Support**





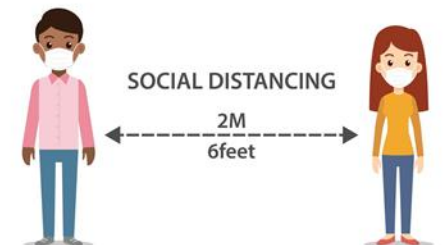
# Access to Medical Care

- **How do you pay for Medical Care/Treatment without a job?**
- **How do you access free or reduced medical care without transportation?**



## Contacts= Independence

- Our interactions with friends, family, faith-based family, and associates increase independence.
- Co-worker's assist in our independence.
- Contacts are Reduced or eliminated in COVID-19 Pandemic 2020-2021.

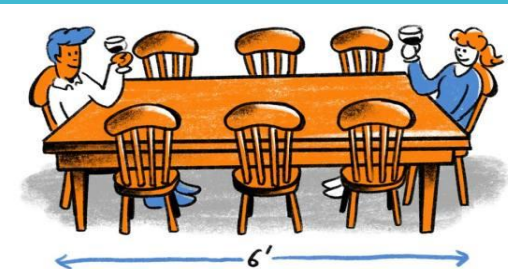


# Solutions – Creative Problem Solving

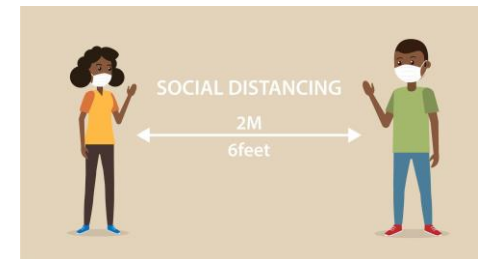


**There is  
no box.**

# Ideas/ Suggestions

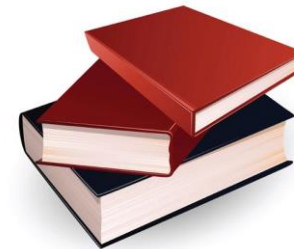


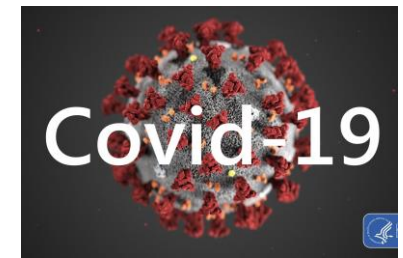
- Wondering if a person is eating-  
Food Drop Off -“Meal”.
- Visiting – Telephone calls, post cards, controlled visits if possible.
- Network for the person seeking resources.



# Ideas Suggestions

- Grocery/pharmacy shopping for FBO, family, and/or friends.
- Share or trade off puzzles, books, etc.
- Call Tree
  - Letting them know they are not alone.





# Ideas/ Suggestions

- Schedule a meeting and connect others on the call.
- Seniors get to visit their friends, multiple people at one time.
- Just like “social time” in FBO services.

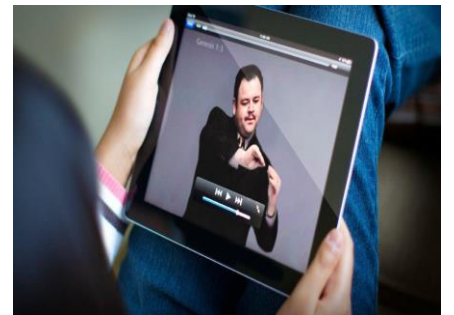




# Resources – Language Barriers



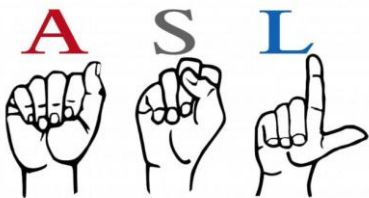
- **Communication- Messages in Different Languages.**
- **Messages in American Sign Language- ASL.**
- **Deaf Communications- Video Messages to reduce barriers.**
- **Don't forget Transportation!**



# Accessible Formats for Messages



- **American Sign Language (ASL)**
- **Audio Formats for people who are Blind.**
- **Large Print- 18-20 Font, Bold, Sans Serif, High Contrast. For people who have Low Vision.**
- **Spanish and other Languages.**





## Independence and Access

- **With the elimination or reduction of independence; access to basic supplies, medical care, face-face contact with people, and transportation causes dependency and depression.**





# Community Support

- **Communication Needs (People who are Deaf, People who speak English as a second language, People who have Cognitive or Intellectual Disabilities, People who are Senior in Age, People with compromised health conditions, and People with low literacy).**

# Common Factors Highlighted

- **Transportation**
- **Communication/Language**
- **Networking of Resources**
  - **Food**
  - **Medical**
- **Contacts with People**



**Bring People  
Together  
Through  
Discussions-  
Ask Them!!!!**



**There is  
no box.**





## Contact Information

- **Glenda Ford-Lee, MHR**
- **At-Risk Populations Coordinator**
- **Oklahoma State Department of Health**
- **Emergency Preparedness & Response Services**
- **Email: [GlendaFL@health.ok.gov](mailto:GlendaFL@health.ok.gov)**
- **Mobile: 405-543-8499**